A school of goldfish swimming in clear water. One fish in the center is purple, while the others are gold. The purple fish is the focal point, standing out from the crowd.

2009-2010

Report to the Community

Stand Out from the Crowd



Randolph Community College
& RCC Foundation

Stand Out

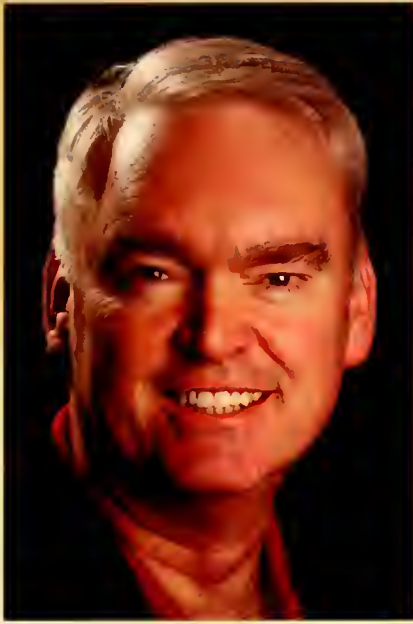
@ Randolph Community College



Find us on
Facebook



www.randolph.edu



Welcome from the President

Our mission is to serve our community – serve the students, the businesses and industries, and the economic and workforce development of our community. All of our training, education, and services are provided to make our community a better place to live.

In this *Report to the Community*, you will find stories and pictures representing some of the highlights of this past year’s efforts to fulfill our community mission. It is our privilege to share this story with so many of you who help to make these things possible through your very generous participation, encouragement, and support.

It is remarkable that this year’s record enrollment, new programs, extraordinary service to our students, awards and honors won, and other achievements were accomplished in a severe recession and with the most difficult budget in our College’s history. How? Only by the extraordinary dedication and commitment of our faculty and staff; the incomparable support we get from our volunteers, friends, and donors in the community; and the exceptional service of our Board of Trustees and Foundation Board of Directors.

William Butler Yeats once said: “Education is not the filling of a pail, but the lighting of a fire.” Thank you for supporting RCC as we endeavor to light a fire in the community that will help people pursue their dreams and live their passions!

Creating Opportunities. Changing Lives.

Dr. Robert S. Shackleford Jr.
President, Randolph Community College

Board of Trustees

(as of July 1, 2010)

Robert B. Davis	Elbert J. Lassiter
John M. Freeze	Curt J. Lorimer
James P. Hill Jr.	Alan S. Luria
Lillian B. Jordan	Fred E. Meredith
Jack C. Lail	R. Andrews Sykes



James M. Campbell Jr.
Chairman



F. Mac Sherrill
Vice Chairman

Mission: To provide educational and training opportunities that make a positive change in the lives of students and the community.

Vision: To be the premier educational resource for helping the people of Randolph County achieve their career goals and personal dreams.

Values: Community, Employees, Quality Education, Radical Hospitality, and Student Success.

Randolph Early College High School
Graduation 2010



2009-2010 Crowd Pleasers

RANDOLPH EARLY COLLEGE HIGH SCHOOL GRADUATION

Fifty-nine high school students from Randolph County made history in May 2010, becoming the first graduating class from the Randolph Early College High School located on Randolph Community College's Asheboro Campus.

Around 400 people gathered on the front lawn of RCC on May 19 to witness the occasion. Just one week earlier, at Randolph Community College's May 12 graduation, 29 of the RECHS students had received Associate in Arts degrees.

In his remarks, RCC President Robert S. Shackelford Jr. told the audience that Randolph Early College High School had a record of academic excellence and was one of the top achieving high schools in North Carolina. He said, "This inaugural graduating class has set the bar very high for all classes to follow. And that bar is this: At the Randolph Early College High School, mediocrity is not acceptable; the pursuit of excellence is the standard."

RECHS has had a history of excellence since it opened in 2006. The school earned the North Carolina Honor School of Excellence designation in the ABCs of Public Education report for both the 2009-2010 school year and the 2008-2009 school year. This recognition is given to schools whose students achieve greater than 90% overall proficiency on state tests. In 2008-2009, RECHS was the eighth highest performing early college high school in the state out of over 70 early college high schools. In 2007-2008, it was recognized as a School of Distinction with 88.2 percent of its students performing at or above grade level. In 2006-2007, it was also a School of Excellence.

In addition, RECHS was an Innovator Award Finalist in the New Schools Project in 2010. Criteria for this award includes student performance measured by state exams, including achievement gaps, dropout rates, suspensions, comparisons to district performances, and enrollment of under-represented minorities and disadvantaged students.

RECHS is the most diverse high school in Randolph County with over 25% minority student population. Over 70% of its students are first-generation college students. Over 30% of its students are economically disadvantaged. Yet, the RECHS senior class of 2010 earned more than \$950,000 in scholarships and grants. The school consistently has the highest attendance in Randolph County. The average college GPA of the students is 2.6 with 87 of its students recognized on RCC's spring 2010 honor roll.

DISTINGUISHED SERVICE AWARD



Martha L. Johnson was the recipient of the RCC Board of Trustees 2009 Distinguished Service Award in July 2009. Johnson served on RCC's Board for over 31 years and retired on June 30, 2007.

She was awarded the status of Trustee Emeritus in November 2007.





BASIC SKILLS GRADUATION

Randolph Community College's Basic Skills Programs more than doubled the participation in graduation ceremonies for Adult High School Diploma and General Educational Certificate (GED) graduates during the 2009-2010 school year by holding three ceremonies instead of one. Since students graduate from the programs at various times throughout the year, many students did not participate in the traditional May ceremony.

Only 44 students, or around 15% of the graduates, participated in the ceremony for the 2008-2009 school year. For the 2009-2010 school year, the participation rose to over 100 graduates, or about 21%; ceremonies were held in December 2009, May 2010, and August 2010.

FLAG DAY

Randolph Community College commemorated Flag Day on June 14 with a ceremony in which the College was presented with a flag that had been flown over the U.S. Capitol in Washington. The donation of the flag was requested by Darlene Gilliland, administrative assistant to the director of the ESTC/ coordinator of EMS, through Congressman

Howard Coble's office. Congressman Coble had arranged for the flag to be flown over the Capitol on March 6, 2010, to commemorate the successful tax referendum vote that will benefit capital construction on RCC's Asheboro Campus.

CULTURAL ARTS SERIES

RCC has continued its successful Cultural Arts Series, introduced in 2008 as part of Dr. Robert Shackelford's Presidential Initiatives for the year. The first year's performances included a popular local band, Bantum Rooster; a presentation of "Go, Dog. Go!" by the UNCG Theatre and the North Carolina Theatre for Young People; "Mr. Lincoln's Office," a one-man show based on the writings of Abraham Lincoln; and lecturer Dr. Elliot Engel on "The Tortured Genius of Edgar Allan Poe."

This past year's series included a World Stage event with international dancing and music; a play, "Piece Work," by the Touring Theatre of North Carolina; an evening with former N.C. poet laureate Fred Chappell; and another popular performance by the UNCG Theatre/ North Carolina Theatre for Young People of "Wiley and the Hairy Man."

STORM READINESS

Officials from the National Oceanic and Atmospheric Administration's National Weather Service recognized RCC as a StormReady Supporter in November 2009. RCC was the first community college in the state to receive the StormReady Supporter designation, which recognizes businesses that take a proactive approach to improving local hazardous weather operations and awareness.

BIOTECH CAMP

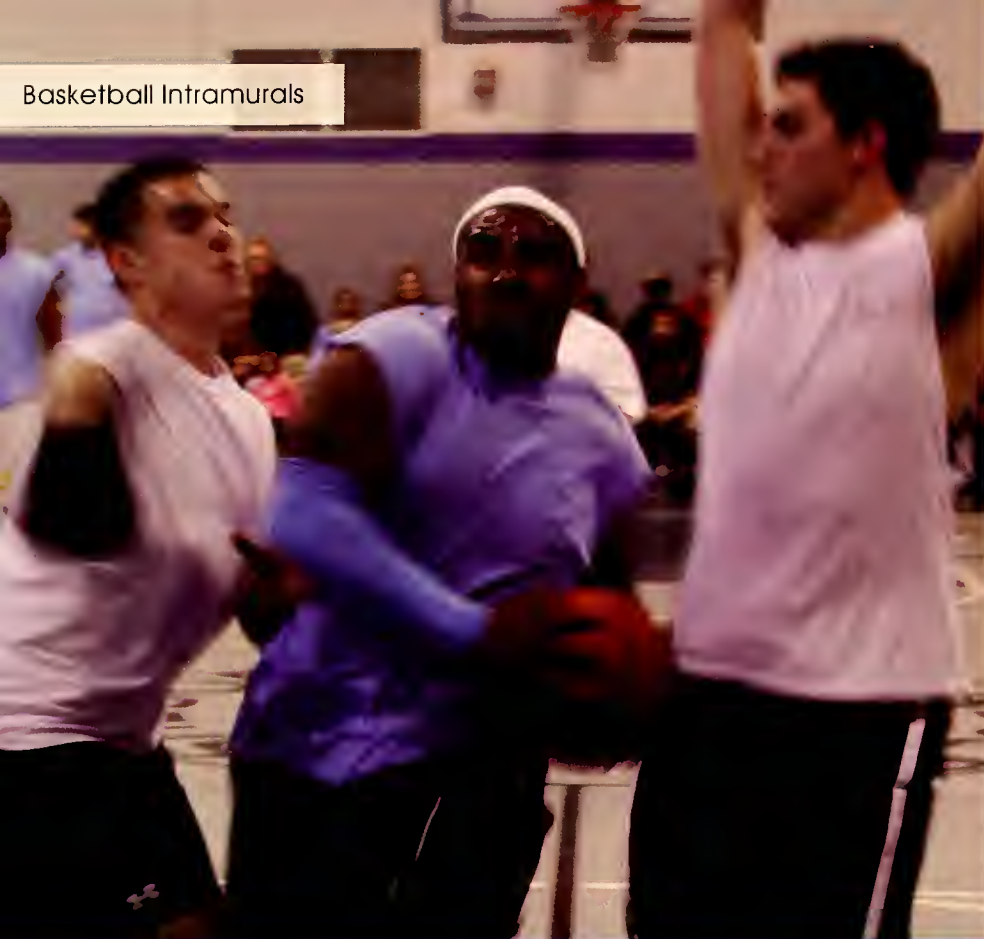
Twenty-two rising ninth graders were introduced to biotechnology as a career during RCC's third Biotechnology Basics Camp held in June 2009. The students were introduced to DNA and proteins and learned about environmental monitoring; they also completed several hands-on activities designed to illustrate the all-encompassing nature of biotechnology.

ADVISING CADRE

Faced with overwhelming enrollment numbers in fall 2009, RCC took a proactive approach to avoid long lines at registration. An advising cadre was organized and new students were invited to complete early enrollment during a two-week period prior to regular registration.



Basketball Intramurals



INTRAMURALS

RCC teamed with the Asheboro YMCA to offer Intramural Sports to RCC's curriculum students for the first time in spring 2010. Basketball and volleyball schedules were offered with four teams participating in each. The basketball teams took to the courts from February 17 through March 31, with the Pacers ending up in 1st place; 2nd place-Warriors; 3rd place-Nets; 4th place-Kings. Volleyball began soon after with the Spitfire Sharks, Orange Crushers, Scorpions, and Gators playing games from April 1 through May 27. The final results placed the Scorpions at #1; 2nd place-Sharks; 3rd place-Crushers; and 4th place-Gators.

COFFEE EXCHANGE

RCC welcomed The Coffee Exchange to the Asheboro Campus in fall of 2009, giving the students a number of choices in coffees, espressos, cappuccinos, frappes, lattes, mochas, and smoothies. It has been a big hit with the students.

THE REFERENDUM VOTE

On March 2, 2010, Randolph County voters said "yes" to a one-fourth of a cent sales tax referendum for educational projects. It initially will



provide capital funds for RCC to renovate the old Klausner Furniture plant on Industrial Park Avenue. The 44,000-square-foot warehouse will provide space for classrooms dedicated to training Randolph County citizens for new, sustainable jobs.

The new Continuing Education and Industrial Center will double the space for RCC's Machining Technology program and house the new Industrial Engineering Technology program. It will also double the space for Continuing Education classes and will include a state-of-the-art, customized training center for businesses and industries.

COSMETOLOGY CENTER OPENS

Randolph Community College's new Cosmetology Center welcomed the public for the first time on Nov. 5 with a grand opening. A brief ribbon-cutting ceremony included remarks by various RCC dignitaries and a couple of Cosmetology students. One of the students then gave the "first haircut" to RCC President Bob Shackelford. The 6,000-square-foot Cosmetology Center, located in Hillside Shopping Center at 1003 S. Fayetteville Street, will accommodate 36

students at a time at styling stations on the floor, plus students in two classrooms. The Center holds 10 shampoo stations, 12 dryers, a waxing room, and a manicure/pedicure area. The first class enrolled 18 students; a second class of students enrolled in January.

ASHEBORO CAMPUS IMPROVEMENTS

Several renovations were completed at the Asheboro Campus during the 2009-2010 school year, the first involving the space in the Administration/Education Center that was freed up when Automotive Systems moved to the new Richard Petty Education Center last year. The space was repurposed into a spacious learning center for RCC's Basic Skills department, which moved from the second floor of the Learning Resources Center. The new space includes large, light-filled classrooms with wall-to-wall white boards and a new entrance on the east side of the building.

The Learning Resources Center second floor was then renovated to house a new Writing Center, which will be a key asset in implementing RCC's QEP project, *WriteNOW!*

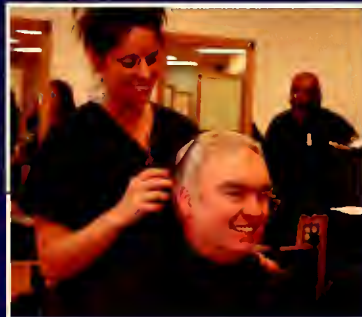
The second floor of the LRC is now home to many of RCC's Arts & Sciences instructors.

A third, smaller renovation took place when a small room adjacent to RCC's Armadillo Café was redecorated to provide a faculty and staff dining area. The new Armadillo Room will also be used for select special events.

SECRETARY OF CULTURAL RESOURCES VISITS

Linda Carlisle, secretary of the North Carolina Department of Cultural Resources, toured Randolph Community College's Photographic Technology department April 19. "We were delighted to host (Carlisle) on RCC's campus," said RCC President Robert S. Shackelford. "She had heard so many favorable things about our arts programs that she wanted to visit. . . . She was most enthusiastic about all that she saw on our campus."

Visiting with Carlisle were Mary Regan, executive director of the North Carolina Arts Council, and Bonnie Renfro, president of the Randolph County Economic Development Corporation.





ETTIN

ty C
01

NC Community College
Academic Excellence Award
Dr. [Name]

Academic Excellence

RCC Students Stand Out from the Crowd

ACADEMIC EXCELLENCE AWARD

Sophia resident Donna Reynolds Camp said she always regretted quitting high school. "It was the biggest mistake of my life," said Camp, who has reached several academic milestones following her decision to go back to school. She was named RCC's Academic Excellence Award winner for 2010 and represented RCC at the North Carolina Community College System Excellence Event in Raleigh on April 14. Camp enrolled in the General Educational Development (GED) program at RCC and finished in December 2008. She immediately enrolled in credit classes in RCC's Healthcare Management Technology program. In November 2009, she was inducted into Phi Theta Kappa.

ACADEMIC AWARDS

RCC held its first Student Academic Honors Awards Ceremony on April 29. Two types of awards were presented. The Academic Award is based on the highest GPA in the degree and diploma program of study. The Curriculum Award goes to a student in each

degree and diploma program who is both outstanding in his/her academic achievement and has potential for success in the particular field he/she has chosen.

"Today's community college students are not the second-string players in higher education, but are truly some of the brightest scholars found anywhere," said RCC President Robert S. Shackelford of the new awards. "In this Student Awards Ceremony, we celebrate our students' most notable academic successes."

PHI THETA KAPPA AWARDS

Randolph Community College's Beta Theta Rho chapter of Phi Theta Kappa received numerous awards at the 2010 Carolinas Regional Convention for various projects conducted by the local chapter.

Two individual students earned awards. Terry Parrish, last year's Beta Theta Rho president, won an Honorable Mention in the Distinguished Chapter President category. Sherry Holt won an Honorable Mention for

Distinguished Chapter Member.

Beta Theta Rho once again earned its Five Star Level award, which encourages excellence and recognizes progress in the attainment of goals set by the chapter. The RCC chapter received the Carolinas Superstar Award, a Carolinas Four Clover Challenge award, the Scholarship Hallmark award, and earned Honorable Mentions in the Distinguished Chapter and Service Hallmark categories.

Waymon Martin, business administration instructor and advisor for RCC's group, was presented the Carolinas Region Horizon Award.

INTERIOR DESIGN STUDENTS WIN FIRST PLACE

Interior Design students Latasha Driver of High Point, Jenni Booth of Greensboro, and Melissa Stanley of Asheboro won first place in the Unity in Style competition at the High Point Design Center. The competition

continued on page 13



9%

of the College's revenue comes from tuition and fees.



Vice President
Courtney Cooper

2 Randolph Community College
Student Government Association

Treasurer
Haville Cantelmo

2 Randolph Community College
Student Government Association

1st Vice President
Sara Jackson

2 Randolph Community College
Student Government Association


DR. MICHAEL TAYLOR AWARD
For Servant Leadership
2010

In recognition of one's work that has enhanced the growth of others in their organization, increased commitment, and personal development while helping the organization reach its potential.


OUTSTANDING COMMUNITY SERVICE AWARD
2010

In recognition of one who has performed exemplary community service, made significant contributions to enhance the quality of life in their community, and demonstrated an understanding of his or her responsibility to one's community.


DARYL MITCHELL AWARD
For Outstanding Student
Central Division
2010

In recognition of the no-nonsense, "A" student who demonstrates respect, responsibility, hard work, and leadership.

SGA Awards

was part of a term project in the students' Residential Design II class, under the direction of instructor Ann Smith-Palenchar. Judging was a jury process based on innovation and creativity, competency of the design solution, appropriateness of the design solution for the client selected, use of product, and presentation/rendering of work. The competition was open to upper-level students in two-year associate degree programs and junior and senior students in four- or five-year undergraduate programs in schools in Florida, Georgia, North Carolina, South Carolina, Virginia, Tennessee, and West Virginia.

SGA WINS 3 STATE AWARDS

Three RCC students won awards at the North Carolina Comprehensive Community College Student Government Association (N4CSGA) Spring Conference held March 5-7 in Durham. Randolph Community College was eligible to enter in four award categories and won three.

Natalie Caviness of Asheboro, an RCC Associate in Arts (College Transfer) student and a senior at Randolph Early College High

School, won the statewide Dr. Michael Taylor Award. This award is given to a student whose work has enhanced the growth of others in the organization and increased teamwork and personal involvement while helping the organization reach its potential. Caviness is the first Early College High School student to win an N4CSGA award.

Sarah Elizabeth Blackwell of Asheboro, RCC's SGA president, was awarded the Daryl Mitchell Award for Outstanding Students for the Central Division. This award is given to a student who demonstrates the leadership qualities upon which the organization is founded. One student from each division is selected.

Courtney Cooper of Asheboro, vice president of RCC's SGA, was given the Outstanding Community Service Award by the N4CSGA, also a statewide award. This award is given to an individual who has performed exemplary community service, made significant contributions to enhance the quality of life in their community, and demonstrated an understanding of his or her responsibility to one's community.

COSMETOLOGY STUDENTS WIN

RCC's Cosmetology students attended their first hair styling competitions in April and earned several awards. At the 45th Annual North Carolina Skills USA Leadership and Skills Conference on April 14 and 15, RCC's students dominated the hair color category, winning all five places. The winners were Tiffany Patterson of Asheboro, 1st place; Michelle Lewis of Asheboro, 2nd place; Toshia Cox of Ramseur, 3rd place; Jennifer Gneiting of Randleman, 4th place; and Kelsey Gallegos of Asheboro, 5th place. In addition, Angela Knewstrick of Sophia won 1st place in men's haircutting.

On April 18, the RCC students attended the Hairstrophy student competition in Winston-Salem. Felix McNeil of Asheboro won 2nd place and Tiffany Patterson of Asheboro won 3rd place.

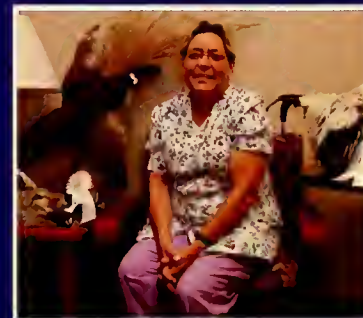
TAXIDERMISTRY AWARD

RCC Taxidermy student Vicki Hayes of Trinity won three ribbons at the 2010 Taxidermy Mini-Course and Competition held at Surry Community College. Hayes won 2nd place for a coyote, 3rd place for a Columbian

continued on page 15

61%

of the College's expenditures go toward instruction or student services/financial aid.





day
papers

Student Leadership Academy Graduates

Wyandotte rooster, and 3rd place for a pheasant. There were 128 entries in the 2010 Taxidermy Mini-Course Competition. Competition entries were judged according to the National Taxidermists Association's specifications.

GRAPHIC DESIGN STUDENT'S LOGO CHOSEN

A logo designed by Advertising & Graphic Design student DeAna Ramirez of Asheboro was chosen to represent the Randolph County Historic Landmark Preservation Commission. Students in RCC's program had been working with the organization since the fall of 2009 to develop a branding campaign and logo as part of their studies.

STUDENT LEADERSHIP ACADEMY

Nine students graduated from RCC's third annual Student Leadership Academy on April 13. The students were chosen based on a competitive process that considered leadership experience, leadership potential, and a letter of reference from a faculty member.

The Student Leadership Academy was revamped this year from a one-day spring event to four evening sessions throughout the academic year and offered students the opportunity to learn about leadership from local and regional leaders. Participants had the chance to identify their own leadership styles and learn how to use these styles effectively. Students created a personal portfolio, which was reviewed by Human Resource professionals. One evening was devoted to leadership and ethics, and, new this year, students were involved in a Student Leadership Project.

PHOTOGRAPHY EXHIBITION

The photographs of 33 RCC Photographic Technology students were featured in an art exhibition titled "Open Eyes" from Jan. 15 to Feb. 5 at the Circa Gallery in Asheboro.

Students were allowed to submit three images of their choosing for consideration for the show, said Greg Stewart, Commercial and Artistic Production Division chair and photography instructor. The project was independent of their classes. The students involved were all second-year students.

Stewart said the theme, Open Eyes, "reflected the wide range of photographs. Our students learn to always be alert to photographic possibilities by keeping their eyes open and their imaginations engaged."

MACHINING AND N.C. A&T

Chris Hunt of Archdale, a second-year Machining Technology student at RCC, was chosen to machine a part for the N.C. A&T State University's Aggie Racing Team. Hunt worked with the team to machine a sprocket box for their Baja Buggy, a dune buggy the engineering students build each year to compete in races around the country. Hunt plans to transfer to A&T in 2011 and major in mechanical engineering.

SHACKLEFORD DISTINGUISHED ALUMNI

Randolph Community College President Robert S. Shackleford Jr. was presented with the 2010 School of Human Environmental Sciences Distinguished Alumnus Award at the University of North Carolina at Greensboro on May 13. Shackleford earned his M.S. in Child Development and Family

continued on page 17

3,919

**Curriculum (credit) students enrolled
at RCC in 2009-2010.**



Excellence in Staff and Excellence in Teaching Award Winners



Relations in 1989 and his Ph.D. in Human Development and Family Studies in 1993 from UNCG. Shackelford also delivered the speech at the school's departmental graduation.

EXCELLENCE IN TEACHING

Described as "the epitome of a dedicated instructor," Don Ashley, program head and instructor for Automotive Systems Technology, was the recipient of the 2009 Excellence in Teaching award at RCC. This award recognizes faculty who have consistently demonstrated excellence in teaching. Nominees are selected by their peers. Ashley has been teaching at RCC since 2003.

Comments from Don's students on his nomination form included, "Don is one of the best instructors that I have ever had in my educational career," and "Don was very patient with helping me get caught up with the other students....If I needed any help after class, Don never hesitated to help me out." In addition to his teaching duties, Don was deeply involved in the statewide Curriculum Improvement Project

for automotive repair from 2004 to 2006. He also has served on RCC's Health and Wellness Committee and the SACS Faculty Committee.

EXCELLENCE IN STAFF AWARD

Cindi Goodwin, director of facilities at RCC, was chosen to receive the 2009 Excellence in Staff Award. Since joining RCC in 2006, Cindi has overseen several large construction and renovation projects, including the Richard Petty Education Center. She has been on the forefront of the movement to make RCC "green," supervising the school's recycling program and leading her staff in making the school's facilities more energy efficient.

She also implemented a campus beautification project and the evidence of her efforts is apparent. "One of the most common things we hear from people visiting Randolph Community College is how beautiful the campus looks, how nice the signage is, and how impressive the landscaping is," said President Robert Shackelford in a letter of support of Goodwin's nomination for this award.

EXCEPTIONAL PERFORMANCE

Randolph Community College was one of 11 community colleges in North Carolina that met "Exceptional Institutional Performance" (EIP) standards in the annual accountability measures for North Carolina's 58 community colleges. In addition to meeting or exceeding all eight system standards, these 11 schools met additional performance goals. Those goals were achieving the college performance rates of students who began in, rather than transferred into, the UNC System and attaining at least a 70 percent passing rate for students who sit for a licensure or certification exam for the first time. The accountability measures are based on 2008-09 academic year data.

Additionally, RCC was one of only four colleges in the state who achieved EIP two years in a row. "There is not a college president in this state who is more proud of his or her college's faculty and staff," said RCC President Robert S. Shackelford Jr. "These are not easy standards to meet, so that is why 47 schools did not meet them. We knocked it out of the ballpark."



27

**is the average age of an RCC
Curriculum (credit) student.**

Pottery



Stand Out through Continuing Education

CONTINUING EDUCATION TOPS THE CHARTS

One of President Shackelford's initiatives for 2009-2010 was revitalizing the Continuing Education program. RCC hired a director for its Customized Training Program, which provides education and training opportunities for eligible businesses and industries, and quickly became one of the top ranked programs in the state of North Carolina.

RCC's rankings compared to the other 57 community colleges:

- #1 based cost spent per trainee - \$143.06
- #2 based on the number of trainees trained - 409
- #4 based on the number of companies served - 17
- #16 based on the percentage of dollars allotted and used - 97.5%
- #20 based on the instructional dollars allotted and used - \$18,513 out of \$20,000 allotment.

JobsNOW

RCC received funding in the fall of 2009

through the American Recovery and Reinvestment Act (ARRA) to implement a JobsNOW "12 in 6" program. The "12 in 6" workforce development initiative from N.C. Governor Bev Perdue was designed to benefit North Carolinians who lost their jobs due to layoffs and plant closures.

The initiative created community college programs in 12 careers, each requiring less than six months to complete.

RCC initially offered classes beginning in January 2010 in Nursing Assistant; Office/Clerical; Hospitality; and Heating, Ventilation, Air Conditioning/Industrial Maintenance. The college added Welding and Emergency Medical Technician career pathways in April. As of June, the College had enrolled 68 students in a JobsNOW training pathway.

CAREGIVER COLLEGE

For the second year in a row, RCC's Corporate & Continuing Education Division partnered with Randolph Hospital, Hospice of Randolph County, and Cross Road

Retirement Community to offer a Caregiver College, a one-day intensive training event for home caregivers. The February 2010 event was partially funded by a grant from the Randolph Hospital Community Health Foundation.

One hundred and fifteen individuals attended the training, which included topics such as the ins and outs of long-term care, emergency preparedness, the graying anatomy, taking care of the caregiver, Medicare Part D, and sleep disorders.

EMS/FIRE GOES ONLINE

In the spring of 2010, the College launched a program to offer online emergency medical services courses for continuing education credits. The courses for emergency medical technicians and paramedics include topics like Surgical Airways, The Challenged Patient, EMS Preceptor, and more. The response has been phenomenal, according to Kelly Kirk, director of distance education, averaging 60-70 students per class.



7,718

Continuing Education students
enrolled at RCC in 2009-2010.

Randolph Community College **FOUNDATION**



Steven E. Eblin,
President, RCC Foundation

Scholarships provided by the Randolph Community College Foundation enable students to obtain degrees and skills necessary for employment and to earn college credits toward a bachelor's degree. Last year, the RCC Foundation awarded over \$118,000 in scholarships to students seeking degrees through a Curriculum program and over \$17,000 for students receiving occupational training in Continuing Education. Other support enhances the College's programs and services, like the \$68,000 we provided to start RCC's Cosmetology program last fall. This Report to the Community highlights the many contributors who enable the Foundation to support RCC and its students.

Ashley, a Curriculum scholarship recipient who is enrolled in Healthcare Management Technology, said, "This scholarship will benefit me by allowing me to take the courses I need to achieve my goals of being a graduate at RCC."

The RCC Foundation Board of Directors and I wish to thank every donor who enabled us to create opportunities, change lives, and meet needs. It is because of you that Ashley and students like her are achieving their dreams.

Steven E. Eblin

BOARD OF DIRECTORS

(as of July 1, 2010)

James M. Campbell Jr.
Steven E. Eblin
Regis H. Eger
Jim Foster
Dr. Stuart B. Fountain
Betty F. Foust
Vickie H. Gallimore
James G. Gouty
Neal Griffin III
Dr. J.B. Griffith III
Wilbert L. Hancock
Ann M. Hoover
Curt Lorimer
Waymon Martin
Daffie H. Matthews
Dr. Cynthia G. Schroder
H. Dean Sexton
Dr. Robert Shackelford Jr.
Sherrill W. Shaw
Mini Singh
Steve D. Williams



Dr. Cynthia G. Schroder
Vice President



Daffie H. Matthews,
Treasurer



Susan V. Milner,
Secretary (nonvoting)

Joyce B. Wolford,
Executive Director, RCC Foundation

Susan V. Milner,
Associate Vice President for
Institutional Advancement

Linda C. Morgan,
Foundation Administrative Assistant



Helping Students Persist

Randolph Community College and the RCC Foundation instituted a new program this year—the RCC Pledge. We pledge we will do everything possible to ensure that students in good standing (including academics, attendance, and behavior) do not have to leave RCC due to financial needs beyond their control.

Jennifer McCollom was the first student assisted by the RCC Pledge. She enrolled in Cosmetology in the fall of 2009. Having already obtained a bachelor's degree in theater, Jennifer had worked as a makeup artist in the film industry before returning to school. She needed the Cosmetology training to complement her previous education and work experience and enhance her job opportunities. Because she had previously earned a bachelor's degree, Jennifer was not eligible for traditional financial aid. When it came time to enter her last semester, she had depleted her resources for school. The RCC Pledge provided funds for tuition, fees, books, and supplies for Jennifer's last semester, enabling her to earn her certificate. She has since passed the state board exam that allows her to work as an apprentice under a licensed cosmetologist and is completing her apprenticeship at The Cutting Edge in Asheboro. The RCC Pledge fund is administered through the Foundation. Gifts of any amount are accepted, and donors who contribute at least \$500 are recognized as RCC Champions.

Left: Jennifer McCollum in RCC's Cosmetology Center.



Stand Out in Innovation

Each year, the RCC Foundation offers College Innovation Fund grants to encourage faculty, staff, and students to develop and implement innovative projects that improve the quality and/or quantity of programs and services at RCC. One recent grant supported the "Ask Me Initiative." Karen Ritter, RCC's director of planning & assessment, (pictured left)

coordinated the ten staff, faculty, and students who became "Ask Me Advocates" on campus for the first four weeks of school—answering questions, providing encouragement, and following up with students who did not attend class or who dropped out. The ultimate goal of the project is to improve student retention.



 JEN
KEARNS
2010-2011
Foundation Ambassador

 MATTHEW
2010-2011

Foundation Ambassadors

FOUNDATION AMBASSADORS

Associate degree students who have completed a minimum of nine credit hours in the fall semester with a GPA of at least 3.0 and who are enrolled for a minimum of nine credit hours in the spring semester are invited to apply for the Foundation Ambassador program. The selected students represent RCC and the Foundation on campus and in the community. Ambassadors receive many benefits, including an in-state tuition scholarship for three semesters and a \$200 book allowance. Meet our Foundation Ambassadors for the 2010-2011 academic year.

Shane B. Bryson is a graduate of Southwestern Randolph High School and attended Southern Wesleyan University. He is majoring in Computer Information Technology at RCC and plans to also earn a history degree from the University of Maryland online. Shane works part time as a Distance Education facilitator at RCC. He also serves as president of RCC's Student Government Association.

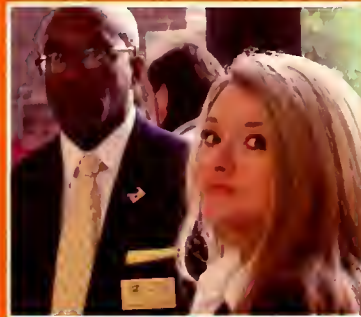
A Photographic Technology student, **Lisa B. Vitale** is originally from Ft. Lauderdale, Fla., where she attended Coconut Creek High School before completing her GED at RCC. In her free time, she enjoys volunteering at the Asheboro soup kitchen, helping with the Victory

Junction Gang Camp Annual Toy Drive, assisting with the Salvation Army, and collecting donated items to mail care packages to active military members stationed abroad. After graduation, she plans to assist a local wedding photographer and do freelance work while establishing a client base.

Joy B. Kearns, who is double majoring in Associate in Arts (College Transfer) and Healthcare Management Technology, attended Southwestern Randolph High School before coming to RCC to complete her GED. She works as a Financial Aid work-study at RCC and plans a career in dental health.

Donald B. Matthews, a Business Administration major, is a graduate of Jordan Matthews High School. He founded a community outreach ministry, is active with the Randleman Planning Committee, is a member of the Common Threads diversity group at RCC, and works part time as a recruiter as part of RCC's Male Minority Mentoring program. He plans to continue to work with community outreach after graduating from RCC.

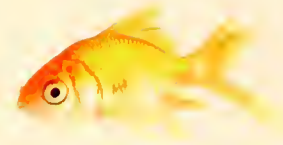
Pictured left to right:
Shane Bryson, Lisa Vitale, Joy Kearns, and Donald Matthews



\$118,342

Scholarship funds awarded to Curriculum (college credit) students.

Annual Giving Honor Roll



The RCC Foundation would like to express appreciation to the following investors who generously supported Randolph Community College & our students with cash gifts from July 1, 2009, through June 30, 2010.

Benefactor (\$10,000+)

Hans Klausner and the Hans Klausner Foundation
Lillian & Tom Jordan

Leader (\$5,000 - \$9,999)

Pyramid Services
Mr. & Mrs. Wayne Thomas

President's Club - Honor Council (\$2,500 - \$4,999)

Asheboro Elastics Corporation
Beta Theta Rho Chapter of Phi Theta Kappa
Commonwealth Hosiery
Bill & Ann Hoover
Alan & Jacqueline Luria
Jute M. Ramsay
Technimark Inc.
Mr. & Mrs. Mike Thrall

President's Club (\$1,000 - \$2,499)

Acme-McCrary & Sapona Foundation Inc.
Advisors Financial Center
Anonymous
Clark & Diane Bell
Jacquelyn Church Betts
David & Judy Bryant
Mr. & Mrs. James M. Campbell Jr.
Carolina Bank
William B. Chandler
Chick-Fil-A

Communities in Schools of Randolph County
JB & Claire Davis
Delta Delta Chapter No. 6036
Steve & Rhonda Eblin
Dr. & Mrs. Stuart Fountain
J.B. & Lisa Griffith
Wilbert & Shirley Hancock
Jimmy & Pam Hill
Anne Hockett
Martha Johnson
Jack & Betty Lail
Ross Mahan
Waymon & Louise Martin
McDowell Lumber Company
Mr. & Mrs. Fred Meredith
Bill & Susan Milner
Elizabeth Mitchell
Progress Energy
Pugh Funeral Homes
Randolph Hospital
Randolph Rotary Club
RE/MAX Central Realty
Dr. & Mrs. Robert S. Shackleford Jr.
Sherrill W. Shaw
Mr. & Mrs. Jerry Simpson
Story Construction Co. LLC
SunTrust

Dean's Club (\$500 - \$999)

Anonymous
Archdale Trinity Civitan Club
Mr. & Mrs. Talmadge Baker
BB&T

Ben Owen Pottery Inc.
Mr. & Mrs. Bill Buhrman
Marvin & Helen Caviness
CenturyLink
CommunityOne
Cornerstone Health Care
David Couch
Diane & Steve Frost
Susan & Richard Garkalns
Goodyear Tire & Rubber Co.
James & Gail Gouty
Greensboro Radiology
Dr. & Mrs. William D. Hoover Jr.
Pat Hurley
Max & Lola Jarrell
Dr. & Mrs. David M. Jones
Augusta Julian
W. Thomas Koch
Christine G. Myers
Robin & Frank Necci
Mr. & Mrs. William H. Redding Jr.
Rob & Dede Reese
Dr. Cynthia Schroder
Robert & Susie Scott
Linda Shankle
Smith Sinnett Architecture
Dr. Andy & Janice Sykes
The Timken Company
Senator & Mrs. Jerry W. Tillman
Dr. & Mrs. James Wilson

Faculty Club (\$250 - \$499)

Anonymous
Asheboro Dermatology & Skin Surgery Center

Asheboro SCORE Chapter 0648
Don Ashley
Wade & Wanda Brown
Kaye Bryan
Candy Brooks Dance Studio
Carl Caudill
Michelle D. Cole
Mr. & Mrs. Ken W. Cornwell
Gail & Rick Crawford
Dan Thomas Pontiac-Isuzu
Mr. & Mrs. Robert B. Davis
Regis Eger
Elastic Therapy Inc.
Mr. & Mrs. John Freeze
Pam Freeze
Mr. & Mrs. Joe M. Gill III
Robert Graves
Shelley & Kyle Greene
George & Linda Gusler
Brandi Hagerman
Beverly Harris
Mr. & Mrs. Gene Holder
Mike & Anne Honer
Lisa Huffman
Mr. & Mrs. Duffy Johnson
Lonnie & Mike Keogh
Timothy Klipfel
Robert Leslie
Dr. Robin & Mr. Allen Liles
Mr. & Mrs. Gerard Lochner
Curt & Vickie Lorimer
Daffie Matthews
David & Dremia Meier
Oliver Rubber Company
Pfizer Foundation

Alan & Mary Joan Pugh
Mac & Ann Pugh
Mario Ramos
Randolph Bank & Trust Co.
Randolph Hospital Foundation
Ready Telecom
David & Bonnie Renfro
Mr. & Mrs. John Revell
Dr. & Mrs. James M. Rich Jr.
Stephen & Susan Schmidly
Sealy Inc.
Mr. & Mrs. Dean Sexton
Mr. & Mrs. Mac Sherrill
Janice & Larry Simpson
Charles & Sara Skeen
David & Lorraine Smith
Mr. & Mrs. Tony Smith
Susan Stout
April & Cooper Thornton
Unique Tool & Manufacturing Company
Dr. & Mrs. Henry Vruwink
Wachovia
Wayne Thomas Chevrolet Cadillac
Aweilda Williams
Joyce & Jerry Wolford

Scholar (\$100 - \$249)

Clark Adams
Don & Pat Allred
Anonymous
Asheboro Body Shop
Asheboro Civitan Club
Asheboro Medical Supplies Inc.

AXA Foundation
Karen & Dwayne Ayers
Lucille Barrington
Jennifer Bennett
Dr. Charles Betts
Charles Bossong
Lillian & Huntley Bossong
Amy Brantley
Carol Bray
Regina Brewer
Kim Cassell
Derrick Caudill
Phyllis Caviness
Joyce & John Coates
Warren Coble
Virginia Collins
Ann Covington
Elaine Cox
Janice Craven
Keith & Jane Crisco
Mr. & Mrs. Duane Dassow
Julia Delgrande
Gary DiNardo
Carl & Catherine Dinga
Tina S. Dixon
Edwin Dunlap
Scott Dunn
Melissa Earliwine
Barbara Eckman
Dawn Egerton
Allen Feezor
Mazie Fleetwood
Susan Fleetwood
Richard Flora
Dr. & Mrs. Les Fowler
Dr. Cheryl Freeman
Vickie & H.R. Gallimore
J. Douglas Galyon Sr.
Jeremy & Connie Garkalns
Candice & Ryan Garrett
Cindi Goodwin

Eva Greene
Nettie Guy
Lonnie Hamm
Candace Hammond
Jan Hancock
Marlana Hancock
Linda Harris
Mr. & Mrs. Don Harter
Cathy D. Hefferin
Mark & Beth Hensley
Mary Highsmith
Jerry & Jo Ellen Holder
Dwight Holland
Cheryl Hoover
Joy Hoover
Julia Howard
Joel Huneycutt
John Hunt
James A. Scott & Son Inc.
Susan Jarrett
Malinda Jennings
George & Amy Jordan
Scott Kauffman
Mr. & Mrs. P. Douglas Kemp Jr.
Debbie Kennedy
Brent Kidd
Virginia King
Kenneth Kinley
Mitchell Kiser
Betsy Klostermyer
Mr. & Mrs. Warren Knapp Jr.
Mr. & Mrs. Philip Koonce
Walter Lambeth
Elbert & Rose Lassiter
Dr. & Mrs. Larry K. Linker
J. Isley Lisk
Jane Lisk
Mr. & Mrs. Reynolds Lisk
Larry K. Little Jr.
Glenda Martin
Elizabeth Mason

Ted & Carol Matney
Tammy Matthews
Betty McCain
Mr. & Mrs. Maxton McDowell
Tony & Gail McDowell
Donnie McNeill
Michael Allan Thrall Fundraiser
Mr. & Mrs. Chuck Miller
Mike & Donna Miller
Mr. & Mrs. Robert E. Morrison
Vicki Moss
Mr. & Mrs. Francis O'Briant
Mr. & Mrs. Patrick O'Briant
Dr. Shirley Owen
Nanci Petruccelli
Austin Petty
Pattie Petty
Sharon Powell
J. M. Ramsay III
Jute M. Ramsay
Senator & Mrs. Tony Rand
Randolph Hospital Volunteer
Organization
Cornelia Rankin
Mr. & Mrs. Sam Rankin Jr.
Sheriff Maynard B. Reid Jr.
Katherine Renfro
Eric & Rachael Revell
Karen Ritter
Elizabeth Russell
Janice Scarborough
Brooke Schmidly
Robert & Anne Shaffner
Allen Shelton
Susan & David Short
Pam Silberman
Mr. & Mrs. Edward Slafky
Charlie Smith
Mary Smith
Sports Attic
Margaret Stephens

Amee & Greg Stewart
Mr. & Mrs. J. Robert Stout
Strider Buick GMC Subaru
Brad & Deborah Thomas
Randell & Susan Thomas
Caitlin Thompson
Laura Thornburg
Mr. & Mrs. Larry Trogdon
Elizabeth Vidrine
Mr. & Mrs. Robert R. Walker Jr.
Dr. & Mrs. Steve M. Walsh
Richard & Kay Wells
Brenda Wilkins
James & Vernece Willett
Greg Williams
Steve & LaWanda Williams
Tara Williams
Elizabeth Wilson
Kyle Wilson
Bill Wittenberg
Jan & Thad Woodard

Friend (Up to \$99)

A & M Construction Services Inc.
Debbie Adams
Gale Adcock
Darren Allen
Jane Allen
David Allred
Sherry Allred
Lori Alston
Alicia Altmueller
Kristin Anderson
Rebecca Anderson
Roger Anderson
John & Carol Andrews
Amy Ange
Anonymous
Christy Armstrong
Asheboro Rehabilitation
Center Inc.

Atkins S&T
Auto Body Shop
Edward Ayers
Ann Bailie
Steve Baltes
Charles Banks III
Steve Banks
Stephen Barden
Holly Barker
Marian & Jerry Barker
Deana Bauer
Johnny Baynes
Dean Beck
Joseph Bell
Nancy Bell
Rebekah Bell
Mr. & Mrs. James Betts
Johnathan & Catherine Binder
Miriam Bivins
Cheryl & Larry Black
Brandon Blankinship
Lisa Bock
Tommy & Jan Boles
Rita Boling
Jim & Debbie Bowman
Mickey & Michele Bowman
Hazel Boyd
Rebecca & Craig Brady
Lynn Brady
Joyce Branch
Jane Braswell
Randy Bray
Diane Brennan
Doug Brewer
Rasheeda Dulaney Brewer
Roger Brewer
Bright Lights Inc.
Donna Briles
Rebecca Briles
Peter & Mary Lynne Brisley
James Brogdon

Annual Giving Honor Roll *(continued)*

Maxine Brookshire	James W. Crawford Jr.	Colette & Ron Estes	Ardis Haislet	Carol Jeffries
Mary Brown	Tremonteo Crawford	Mary Lynn Eubanks	Gwen Hall	Mr. & Mrs. Robert E. Jenkins
Bill Bryant	Jeff Crisco	Melinda Eudy	Mr. & Mrs. Lloyd Hamlet	Maria Jessup
Jonathan & Suzanne Bryant	William Croom	Lisa Evans	Don Hammond	Angela John
Ed & Nancy Bunch	Willy & Clarice Crotts	Aloha Everett	Benny & Peggy Hampton	Wade Johnson
Bunch, Robins & Stubblefield	Katherine Crowell	Brenda & Thomas Fales	Mr. & Mrs. John Harmon	Cathy Jones
David Burch	Bradley & Jane Crumpler	Mr. & Mrs. Charles Farlow	Tracie Hayes	Thomas & Jennifer Jones
Howard & Pat Burkart	Michael Crutchfield	Ashley Fetner	Arlene Hayler	Mark Jones
Nancy Butler	James Culberson	Ken Fields	Mr. & Mrs. William Hayworth	Simon Jones
Amanda Byrd	Mr. & Mrs. T. G. Daniel Jr.	Kemper Fitch	Kelly Heath	Samantha Kauffman
Roslyn Byrd	Anuar Dau	Tammy Fletcher	Caywood Hendricks	B.R. Keller
Debbie Callicutt	Beth Davidson	Ron & Vicki Fletcher	Edna & Will Herring	Ometa Kenan
Mr. & Mrs. Stephen Campbell	Barbara Davis	Rick Flickinger	David Heskett	Doris Kidd
Phillip Carmac	Camille Davis	Richard Forman	Deborah Highfill	Mr. & Mrs. Kenny Kidd
Fernando Carreon	Cassandra Davis	Jim & Missi Foster	Jim & Jewel Hill	Amanda King
Mr. & Mrs. Charlie Casper	Clarence & Margaret Davis	Betty Foust	Teresa Hill	Linda King
Kelly Castellio	Sherri Davis	Denise Fox	Charles & Kay Hobson	Martha King
Victoria Caudle	D-Blaze Inc.	Dr. Deborah Friedman	Mike Holder	Dr. & Mrs. James B. Kinlaw Jr.
Susan Chambers	Alice Dean	John Frizzell	Charleen Holt	Elizabeth Kremer
Charles & Janet Chandler	Rebecca Dean	Doris Frost	Tammy Honeycutt	William Krueger
Debra Cheek	Albert Delia	Jackie Frost	Brenda Hooker	Patricia Kyles
Cathy Chi	Holly Delk	Mr. & Mrs. Groome Fulton Jr.	Evelyn Hoover	Christie Lamb
Don Childers	Robert M. Derr	Barbara Gallimore	Mr. & Mrs. Leon Hoover Jr.	Dr. Melinda Lamb
Rose Chilson	Joseph & Heather Desormeaux	Alexandra Gibson	David Hord	Grey Lane
Carolyn Chisholm	Dr. & Mrs. Malkiat S. Dhatt	Darlene Gilliland	Jared Hotchkiss	Harry Lane
Kathy Chriscoe	Margaret & Joseph DiDona	John Godbold	Carol Howard	April Lassiter
Debbie Christenberry	Matthew J. Dixon	Tammy Goins	Diane Howdeshell	Betty Latham
Patty & William Clark	Mary Duggins	Clark Goodwin	Fred Huffstetler	Maria LeBaron
Bonnie Columbia	Beth Duncan	Ken Grady	Elizabeth Hughes	Joyce Lewis
Betty & Benjamin Cone Jr.	Mr. & Mrs. Woody Durham	Brook Grant	Lisa Hughes	Lynn Lewis
Norma Connell	Kevin Eames	Kelly Green	Greg Hunter	Mr. & Mrs. Doug Light
Mr. & Mrs. Bill Cook	Judith Eaton	Teresa Green	Mr. & Mrs. Richard Hurley	Charles & Carolyn Link
Chris & Leslie Cooper	Frank Edmondson III	Stacy & Chris Griffin	Angela Hutson	Kathleen Logsdon
J. Councilman	Lewis Edwards	Irma Griffith	Johnnie Ingold	Sue Lucas
Jack & Golda Cox	Chuck Egerton	Alison Gusler	Mrs. W. Stine Isenhower	Debbie Luck
Mary Cox	Tracy Emerson	Mr. & Mrs. David Haimes	Mr. & Mrs. David Jarrell	Margaret Luck
Norma & Grady Cox	Ann Engel	Cieanna Hairston	Victoria Jarrett	Tonya Luck

Jennifer Macy
Elaine Mahan
Katherine Malta
Tracy Marino
James Marlowe
Darlene Marsh
Michael & Marie Martin
Cherry Marziano
Bill & Shirley McAnulty
Cathy McCaskill
Mr. & Mrs. Derek McKee
Pauline A. McKee
Katherine McWilliams
Robert Meyer
Lisa Miller
Marie Miller
Carra Miskovich
Caroline & Nick Mitchell
Colleen Mitchell
Mr. & Mrs. Donald R. Monroe
Tonya Monroe
Anne Moore
Danny R. Moore
Jamie Morgan
Linda Morgan
Pat & Molly Morgan
Ronald G. Morgan
Dacia Murphy-Price
Martha Murray
Thomas Nance
Brent Nash
David Neely
Kim & Cherry Newsom
James & Sandra Norman
Carol Nunn
Douglas Oglesby
Ben & LoriAnn Owen
Lisa Park
Garret Parker
Malinda Patrice

Bobby Patterson
Judy Pemberton
Donna Perry
Richard & Joanne Peterson
Arlene Phillips
Pam Pollard
David & Lisa Price
Matthew Price
Tammy Price
Wayne Price
Kathy Bryant Proctor
Lynne Qualls
Don Queen
Larry & Patricia Rakes
Carol B. Ramsay
Mr. & Mrs. Sam Ramsey
Randolph County Democratic
Party Executive Committee
John Rash
Larry Ray
RCC Facilities Staff
RCC Friends of
Caitlin Thompson
RCC Library Services Staff
RCC Staff Association
RCC Student Services Staff
S. Steele Redding
Joyce Reeder
Karen Reid
Angela Revell
Sharon Reynolds
Michael Rhodes
Susan Rice
Tim Rice
Darrell & Mary Rich
Richard Rich
Margaret Riddle
Dr. Mary Rittling
Diana Rivers
Margaret Roark

Steven Roberts
Kelley Rollins
John & Martha Rosser
John Rouse
Candie Rudzinski
Mr. & Mrs. Scott Russell
The Honorable & Mrs. Michael
Sabiston
Barbara Saunders
Ann Savage
Michael Searce
Robert & Lynn Scherer
Joyce Schmack
Janet Schmidly
Scott Schmidly
Nancy Schneidewind
Deanna Schrader
Shelia Scott
C.J. Shaw Jr.
Susan Shaw
Shelly's School of Dance
Sue Shelton
David Shields
Diane Shields
Arif Siddiqui
Curby Simerson
Tina Sisco
Mr. & Mrs. James Skoglund
Debra Slack
Ann Smith
Donna Smith
Doris & Stanley Smith
James Smith
Southwestern Randolph High
School Students
Betty & David Speir
Dr. Rusty Stephens
Christy Stoner
Dr. & Mrs. Charles W. Stout
Howard Surface

Barbara Dunn Swanson
Stephanie Szymorski
Henno Tarikas
Penny Taylor
Susan Teague
Kalora Temple
Glen & Doreen Thaler
Alice Thomas
Ann Thomas
Beth Thomas
Thomas Capital Management
LLC
Todd Thompson
Bill Thompson
Kathy Thornburg
Dr. William C. Thornton Jr.
Philip Toelkes & Brandi Tolbert
Irene Townsend
Transitions Salon & Spa
Joel Trogdon
Margie Trogdon
Marty Trotter
Rodney & Karen Tyler
Bruce VanGilder
Peter VanGraafeiland
Randall & Robin Vanhoy
Jimmy Varner
Joshue Villanueva
Barbara Walker
Kevin Walker
June D. Ward
Sharon Warren
Janice Wassack

Dorothy Watkins
Teresa Weaver
Jill Welborn
Donald Wellington
Charles West
Weston Feed & Seed Inc.
David Whitaker
Renee Whitaker
Kathryn R. White
Lynwood & Valerie White
Robert E. Wilhoit
Chad Williams
Bob & Marty Williams
Tracy Willis
Buck Wilson
Donna Windish
Ann Windle
Diane Winnemuller
Dennis Winner
Angie Winslow
Rhonda Winters
Barbara Wolfe
Worth & Margaret Womick
William & Jane Wood
Grover Yancey
Bonnie York
Darren York
Tammy York
Eddie Yost
James Young
Donald Yousey
Sarah Zimmer

\$188,979

**Gifts to the RCC Foundation
in 2009-2010.**

Lifetime Membership Clubs

Philanthropist Club - (\$1,000,000+)

R. Alton Cox Estate

Platinum Club - (\$100,000 - \$499,999)

Anna Burton Estate

Anonymous Donor-Photography Challenge

Duke Energy Corporation

Howard & Mescal Ferguson

Martha Comer Johnson

Klaussner Furniture Industries

Jack & Betty Lail

Randolph County Board of Commissioners

Sydney Luria Memorial

The Timken Foundation of Canton

U.S. Department of Education

Gold Club - (\$50,000 - \$99,999)

Asheboro Rotary Club

Frank Poindexter

Silver Club - (\$25,000 - \$49,999)

Acme-McCrary & Sapona Foundation

Elizabeth H. Aldridge

William & Ruth Alexander

Allie B. Hinshaw Estate

Marion Stedman Covington

Keith & Jane Crisco

Energizer

Energizer Charitable Trust

First National Bank & Trust Co.

Hans Klaussner Foundation

Cathy H. Hendrick

Hans J. Klaussner

Level Cross Civitan Club

Martha Moleta Morgan

North Carolina Community College

Trust Fund

Tyco Electronics Corp.

Unilever Bestfoods

Bronze Club - (\$10,000 - \$24,999)

Accuchrome Tool & Mold

Allen Precision Industries

American Legion Post 45

American Legion Post 81

BB&T

Jacquelyn Church Betts

Blanche Black

Burlington Industries

Marvin & Helen Caviness

CenturyLink

Delta Delta Chapter No. 6036

Elastic Therapy

Embarq

Georgia-Pacific Corp.

Goodyear Tire & Rubber Co.

Wilbert & Shirley Hancock

Jimmy & Pam Hill

Bill & Ann Hoover

Max & Lola Jarrell

Lillian & Tom Jordan

Dr. & Mrs. George W. Joyner

Kiwanis Club of Asheboro

Dr. & Mrs. Larry K. Linker

Dr. Alan & Jacqueline Luria

MarLouAnn, L.L.C.

Ted & Carol Matney

Ken & Lowanda McDowell

Mid-State Plastics

Nan & Robert L. Hughes Estate

May Parrish

Lee & Anita Phoenix

Progress Energy

Ramseur Inter-Lock Knitting

Ramtex

Randolph Bank & Trust Co.

Randolph Electric Membership Corp.

Randolph Hospital

Randolph Rotary Club

Randolph Telephone Asheboro/Liberty

RBC Centura

RCC Student Government Association

RE/MAX Central Realty

Dr. & Mrs. James M. Rich Jr.

Robert P. Bunker Trust

Sara Lee Knit Products

Sew Special

Robert & Anne Shaffner

Mr. & Mrs. Sherrill W. Shaw

Jim & Sharon Sides

Janice & Larry Simpson

Mary & C. Reitzel Smith

Wachovia Bank & Trust Co.

Donald & Bobbye Wellington

Foundation Club - (\$3,000 - \$9,999)

A & F Vending

Advisors Financial Center

Eddie & Audrey Allen

Archdale Friends Meeting Ragan

House Fund

Asheboro Civitan Club

Asheboro Elastics Corp.

Asheboro Jaycees

Asheboro Plumbing & Heating Co.

Asheboro-Randolph Board of Realtors

Asheboro Woman's Club

Automatic Vending Service

B. B. Walker Foundation

William F. & Patsyanna B. Barker

Harvey A. Barnett Jr.

Belk Company

Tony Bellarosa

Blue Bell Foundation

Beta Theta Rho Chapter of Phi Theta Kappa

J. P. Bost

D. H. & Edith B. Briles

Peter & Mary Lynne Brisley

Mr. & Mrs. J. Michael Brower

Wade & Wanda Brown

David & Judy Bryant

Mr. & Mrs. Jerry Bullins

Howard & Pat Burkart

Dr. Daljit S. Caberwal

Mr. & Mrs. James M. Campbell Jr.

Millie Cannon

Dewey L. Caviness Sr.

Centel Pioneers - Asheboro/Troy ITPA

Champagne Dye Works

Mildred F. Chrisco

Commonwealth Hosiery

The Courier-Tribune

Mr. & Mrs. John H. Croom

Dan Thomas Pontiac

JB & Claire Davis

Dr. & Mrs. Malkiat S. Dhatt

Dick Broadcasting Co.

Du Pont

E. A. Morris Charitable Foundation

Eastman Kodak Co.

Steve & Rhonda Eblin

W. Allan & Patricia Edwards

Employees of Rampon Products

First American Savings Bank

First Bank

First Baptist Church of Seagrove

First Presbyterian Church

The Fluor Foundation

Dr. & Mrs. Stuart B. Fountain

Robert & Pamela Foy

Lifetime Membership Clubs *(continued)*

Friends & Supporters of the
Honorable Russell G. Walker Sr.
Dr. & Mrs. David G. Gimenez
Gossage-McFarland Sports Marketing
Greenfield Industries
Julia F. Grissom
Carl & Linda Grubb
J. Hyatt & Bonnie Hammond
Joyce Harrington
Mr. & Mrs. Johnny Harvell
Michael S. Heazlitt
Dr. Richard & Jeanette Heckman
Barry D. Heller
Jerry & Jo Ellen Holder
Joretta Holt
Louis E. Hudson
Richard & Gail Hurley
Ivey B. Luck Estate
J. H. Allen Inc.
Joan Fabric Corp.
Rick & Nadine Johnson
Robin & Marylou Johnston
Ron & Tabby Jones
Reid & Lois Kearns
Mr. & Mrs. Charles E. Kinney Jr.

Mr. & Mrs. Richard Kite
Dr. Melinda Lamb
Mike & Joanna Lee
Liberty Ruritan Club
Dr. & Mrs. Gerald Limber
Ivey B. & Ruby O. Luck
Mr. & Mrs. Allen Luther
Waymon & Louise Martin
Mac McCarrell
Mike McCracken
Mr. & Mrs. Charles W. McCrary Sr.
McDonald's/McPACH
Doug & Becky McDowell
Dr. Rebekah H. Megerian
Mr. & Mrs. Fred E. Meredith
Mid-State Paper Box Co.
Bill & Susan Milner
Christine G. Myers
National Tooling & Machining Association
Piedmont Chapter
N.C. Nurses Association District No. 31
Tony Ocampo
Ornamental Mouldings
Kenneth Paul
Leo & Melva Peraldo

Mr. & Mrs. Mack Peters
Petty Enterprises
Piedmont Natural Gas Co.
PMA Dixie Division
H. Harold & Dorothy P. Powell
Alan & Mary Joan Pugh
Quik Chek
Jute M. Ramsay
Winifred P. Ramsay
Randolph Arts Guild
Randolph County Medical Society
Randolph Oil Co.
Mr. & Mrs. Sam Rankin Sr.
RCC Campus Food Service
RCC Campus Store
Mr. & Mrs. John F. Redding
S. Steele Redding
Deva & Nancy Reece
Phyllis J. Rees
J. D. Ross Jr.
Sealy
Dr. Robert S. Shackelford Jr.
Linda Shankle
Jerry & Shirley Simpson
Archie L. Smith Jr.

Dr. & Mrs. Charles W. Stout
SunTrust
Dr. & Mrs. R. Andrews Sykes
Technimark
Tom & Joyce Temple
Mr. & Mrs. Wayne Thomas
Mike & Cindy Thrall
Thomas A. & Tracy A. Tolone
The Timken Company
Triad Quality Forum
Von-Tex Hosiery Mills
Wachovia Bank & Trust Co.
Wachovia Foundation
The Honorable & Mrs. Russell G. Walker Sr.
Michael & Buffy Waltrip
Ernest "Pep" & Dorothy Watkins
Jack & Jane White
White Oak Family Physicians
Willis Honeycutt Estate
Joseph R. Wingfield
Mary S. Wood
Xi Delta Epsilon of Beta Sigma Phi

President's Circle Members *(July 1, 2009 – June 30, 2010)*

Jacquelyn Church Betts
Mr. & Mrs. James M. Campbell Jr.
Mr. & Mrs. Steve Eblin
Mr. & Mrs. John M. Freeze
Mr. & Mrs. H.R. Gallimore
Dr. & Mrs. J.B. Griffith III
Mr. & Mrs. William D. Hoover

Martha Johnson
Mr. & Mrs. Tom Jordan
Mr. & Mrs. Jack Lail
Dr. & Mrs. Alan S. Luria
Mr. & Mrs. Fred E. Meredith
Sherrill Shaw

\$95,028

**Foundation expenditures supporting
RCC's programs.**

Scholarships

The RCC Foundation is fortunate to have numerous funds from which scholarships are awarded each year. The following scholarships were either awarded or fully funded during 2009-2010.

A & F Vending	John Clark Chrisco Memorial	Lillian & Tom Jordan	Randolph Hospital Nursing Assistant
Advertising & Graphic Design	D. Clinton Comer Memorial	Dr. & Mrs. George Joyner	Randolph Machining Technology
Jim Alexander Memorial	Mabel Cochrane First Presbyterian Nursing	Dr. George Joyner Memorial	Randolph Rotary Club
The Alexander Family	Community Scholarships	John Michael Joyner Memorial	Randolph Rotary Scholar
Natalie Allen	Dan Thomas Pontiac Inc.	Michael N. Kidd Sr. BLET Uniform	RCC Administrative Services
Allen Precision Industries	JB Davis	Kiwanis Club of Asheboro	RCC Campus Food Service
American Legion Post 81	Delta Delta Chapter of Beta Sigma Phi	Kiwanis Club of Asheboro -	RCC Campus Store
Joseph H. Anderson Memorial	Santokh S. Dhatt Memorial	Marvin T. Caviness	RCC Faculty Association
Asheboro Jaycees	Evelyn Glass Durham Memorial	Eugen Klausner Memorial	RCC Foundation Charity Auction
Asheboro Plumbing & Heating Co. Inc.	Wilburn & Ethel Eaton Memorial	Klausner Furniture Industries	RCC SGA/Bill Baldwin
Asheboro-Randolph Board of Realtors	W. Allan Edwards	Kodak Professional Imaging	RCC SGA/Ronald W. Bushnell
Asheboro Rotary Club	Energizer	Betty & Jack Lail	RCC Student Government Association
Asheboro Rotary Scholar	First Bank	Level Cross Civitan Club	Phyllis Jean Rees Merit
Asheboro SCORE Chapter 0648	First American Savings Bank	Aaron Keith Linker Memorial	Dr. & Mrs. James M. Rich Jr.
Asheboro Woman's Club	First National Bank of Randolph Co.	Larry K. Linker	Marvin J. Rich Memorial
Joseph E. Auman Memorial	First Southern Savings Bank	Tyler R. Lisk Memorial	Ruritan Club of Liberty
Automatic Vending Service	Pamela Carter Foy ADN	Ivey B. Luck	Sew Special Inc.
William & Patsyanna Barker	Virginia Keating Foy/Sue Butner Carter/	Sydney Luria Memorial	Mr. & Mrs. Robert S. Shackelford Sr.
Barbara Ambrose Barnett Memorial	Florence Airs Smith Memorial	Machining Technology	Fries & Josephine Shaffner Memorial
Belk-Yates Company	Sidney A. Gayle Jr.	Mello Yello	Nancy J. Shanas Memorial
Richard Bell Memorial	Goodyear Tire & Rubber Company	Mid-State Plastics	Terry Shankle Award of Excellence
Beta Sigma Phi Xi Delta Epsilon	Carl & Linda Grubb	Martha Moleta Morgan	Silver Jubilee
Elizabeth Russell Bishop Memorial	J. Hyatt & Bonnie Hammond	N.C. Nurses Association District #31	Doug Smith Memorial Auto Restoration
J.P. Bost	The Hancock Endowed Scholarship	New Century Scholars	Mary & C. Reitzel Smith
M.H. Branson	Bob Heist	Joseph F. Parrish Sr. Memorial	Dan Thomas Memorial
Joyce Walker Briden Memorial	Jean Julian Henderson Memorial Designated	Leo & Melva Peraldo	Michael Allan Thrall Memorial
D.H. & Edith B. Briles	John, Kimberly and Jennifer Hendrick	Petty Enterprises Inc.	Designated
Howard & Patricia Burkart	Memorial	Lee & Anita Phoenix	George "Ned" Tonkin Memorial
Bryan Carden Memorial	Norman Hennessee Memorial	Photo Alumni Association of RTI (PAARTI)	Wachovia Bank & Trust
Carolina Power & Light	Jimmy & Pam Hill	J.W. "Willie" & Frances Plummer	Honorable Russell G. Walker Sr.
Hubert Causey Machining	Allie B. Hinshaw	PMA Dixie Division Inc.	Wade Walker Memorial
Dewey L. Caviness Sr.	Bill & Ann Hoover First Generation	H. Harold & Dorothy P. Powell	Dorothy & Ernest Watkins
Mr. & Mrs. Marvin T. Caviness	Jerry Howell Memorial	Quik Chek Inc.	Bertha Lewis Wellington Memorial
Centel Pioneers-Asheboro/Troy ITPA	W.W. & Sue Howell	Mac Ramsay	Fred J. Wellington
Centura Bank	Robert L. & Nan Hughes	Winifred P. Ramsay Nursing	Glenn J. White II & David B. White
Rev. Martin & Rebecca Chapman	Max & Lola Jarrell	Randolph Bank & Trust	
Robert L. Cheatham Jr./American Legion	Bob Johnson Memorial	Randolph Electric Membership Corp.	
Post 45	Lola M. Jones Memorial Nursing	Randolph Hospital Medical Office	

Foundation Balance Sheet

(June 30, 2010 - unaudited at time of publication)

Assets

Cash and cash equivalents	\$ 395,255
Investments held by fiscal agent	\$ 7,792,769
Accounts receivable	\$ 250,038
Pledges receivable	\$ 3,902
Coin collection	\$ 300
TOTAL ASSETS	<u>\$ 8,442,264</u>

Liabilities

Accounts payable	\$ 1,406
TOTAL LIABILITIES	<u>\$ 1,406</u>

The RCC Foundation continuously seeks contributions to support student scholarships and programs and activities of the College. To help, simply mail your check, along with a note indicating what you wish to support with your gift, to RCC Foundation, P. O. Box 1009, Asheboro, NC 27204-1009. For more information, contact Joyce Wolford at (336) 633-0295 or jbwolford@randolph.edu.

Important Tax Note: Gifts to the Foundation will be recorded for 2010 if they are received in the Foundation office by 5 p.m. on Wednesday, December 22, or postmarked by December 31.

Photo Credits:

Wesley Beeson, Justin Icenhour, Bill Thompson, Ashley Fetner, Cathy Hefferin, and Lisa Hughes

Memorials & Honorariums

(June 1, 2009-June 30, 2010)

MEMORIALS

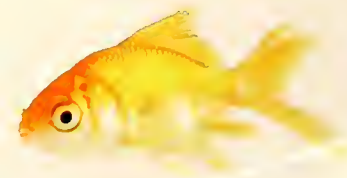
Joseph H. Anderson
Joseph Auman
Frances Buchanan
Sue Butner Carter
John Clark Chrisco
Frances H. Cripps
Wilburn & Ethel Eaton
Virginia Keating Foy
Lorraine & Sidney Gayle
Jean Julian Henderson
Lequita Ingold
Robert W. Johnson
Lola M. Jones
John Michael Joyner
Michael N. Kidd Sr.
Jessica King
Aaron K. Linker
Tyler R. Lisk
Sydney Luria
Quincy Price
Marvin J. Rich
Mr. & Mrs. Robert S.
Shackleford Sr.
Terry Shankle
Florence Ains Smith
Daniel M. Thomas
Michael A. Thrall
George E. "Ned" Tonkin
Russell G. Walker

HONORARIUMS

Melanie Avelino
Talmadge Baker
Megan Barbre
Clark Bell

Kim Black
Jan Boles
Debbie Bowman
Raphael L. Brown
Harold Brubaker
Dave Bryant
Heather Callicutt
Rebecca Carriker
Marvin T. Caviness
Natalie Caviness
MiMi Cooper
Linda Cranford
Keith Crisco
Clarice Crotts
Lewis Edwards
Pamela Carter Foy
Susan Garkalns
Candice Garrett
Clarence Goodman
Cindi Goodwin
Dr. J.B. Griffith III
George Gusler
Nettie Guy
Bob Heist
Pam Hill
Anne Hockett
Bill Hoover
Max & Lola Jarrell
Duffy Johnson
David Jones
Lillian & Tom Jordan
Gidget Kidd
Linda King
Dr. Melinda Lamb
Elbert Lassiter
Jane T. Lisk

Waymon Martin
Dremia Meier
Mike Miller
Elizabeth Mitchell
Bob Morrison
LoriAnn Owen
Susan Parent
Betty Peoples
Pattie Petty
Sam Ramsey
Ann M. Rankin
Bonnie Renfro
Nan Revell
Barbara Robinson
Brooke Schmidly
Dr. Robert S. Shackleford Jr.
Daniel Smith
Jerry Simpson
David Smith
April Thornton
Jimmy Voncannon
Laura Wilson
Mary S. Wood





Randolph Community College is accredited by the Commission on Colleges of the Southern Association of Colleges and Schools to award the associate degree. Contact the Commission on Colleges at 1866 Southern Lane, Decatur, Ga. 30033-4097 or call 404-679-4500 for questions about the accreditation of Randolph Community College. The College is authorized by the State Board of Community Colleges to award the Associate in Applied Science degree, the Associate in Arts degree, and the Associate in Science degree. 2,500 copies of this public document were printed at a cost of \$4,582.61. EOE. PIO/5/11.